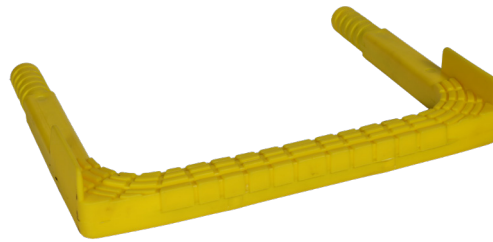


Sure-Step Step Irons

DESCRIPTION

Sure-Step step irons consist of a galvanized steel iron encapsulated in a non-slip polymer coating and is certified for use in sewerage and stormwater applications. The polymer coating total encapsulates the iron providing superior protection against corrosion and chemical attack. The design also incorporates a non slip tread and a raised edge to prevent side slippage.



FEATURES

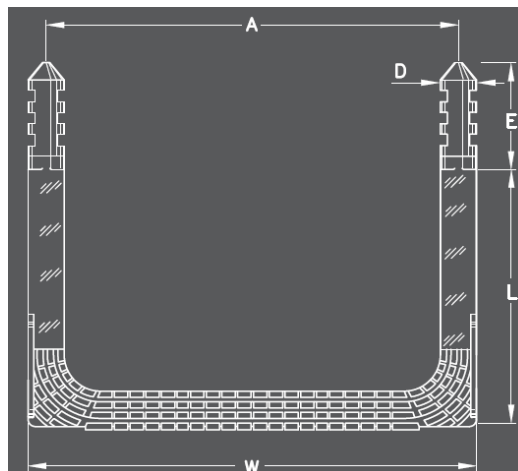
- Galvanized 400MPa steel step iron
- Full plastic encapsulation to resist corrosion and chemical attack
- Wide non slip tread with raised edge to prevent slippage
- Available in a range of sizes
- Use in both sewerage and stormwater applications
- Manufactured in Australia

COMPLIANCE

Complies with the following regulations and standards:
EN13101-2002
AS1657-2018
ISO9001:2015 QA Certified

ESTIMATING & SIZING

CODE	SIYP225	SIYP286	SIYP375	SIYP400
Hole Centres (A) (Nominal)	225mm	286mm	375mm	400mm
Overall Width (W)	250mm	311mm	400mm	425mm
Exposed Leg Length (L)	175mm	175mm	175mm	175mm
Embedded Leg Length (E)	70mm	70mm	70mm	70mm
Diameter (D)	26mm	26mm	26mm	26mm

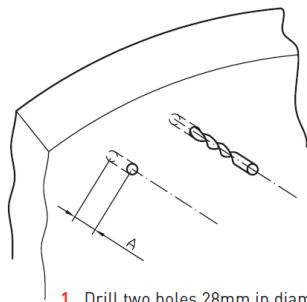


Continued over Page...

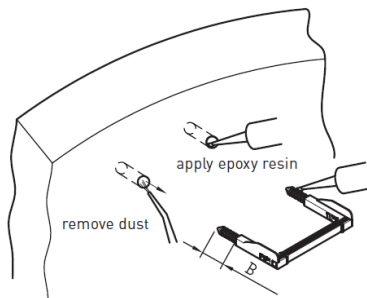
INSTALLATION - DRILL & EPOXY METHOD



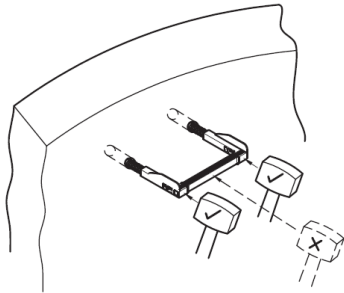
TECHNICAL DATA SHEET



1. Drill two holes 28mm in diameter to suit the relevant step width horizontally and Parallel to each other into the chamber wall Distance A should be greater than distance B

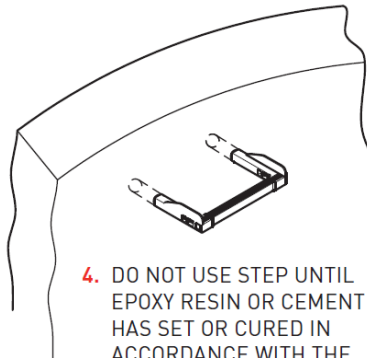


2. Remove concrete dust from holes and apply epoxy resin or quick drying cement to the step leg and inside the holes



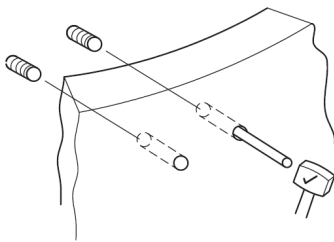
3. Evenly hammer the step into the holes

DO NOT HAMMER ON THE CENTRE PART OF THE RUNG

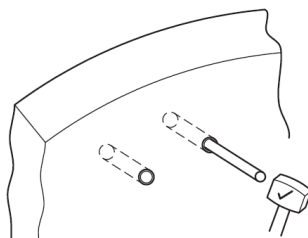


4. DO NOT USE STEP UNTIL EPOXY RESIN OR CEMENT HAS SET OR CURED IN ACCORDANCE WITH THE SUPPLIERS INSTRUCTIONS

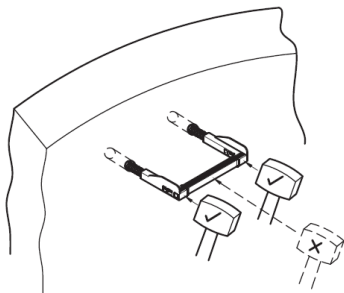
INSTALLATION - DRILL & EPOXY METHOD



1. Clean the 26mm internal diameter precast anchor or ferrule using a steel rod and mallet knocking the cap out of the ferrule

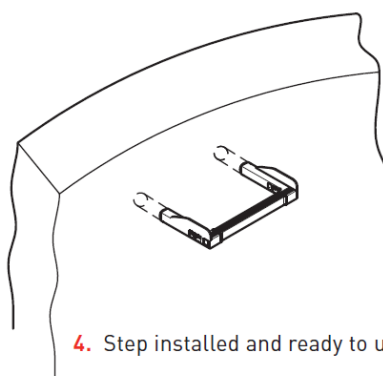


2. Clean the ferrules from the inside of the manhole section



3. Evenly hammer the step into the holes

DO NOT HAMMER ON THE CENTRE PART OF THE RUNG



4. Step installed and ready to use

Allcon products are manufactured to the highest quality, and if used in the correct applications and in accordance with all directions, will produce quality and consistent results. However Allcon Group Pty Ltd accepts no responsibility for inappropriate usage or faulty workmanship by the end user.

Product: Sure-Step Step Irons
25 November 2020

P: 1300 ALLCON (255 266)
E: sales@allcongroup.com.au

www.allcongroup.com.au