

TECHNICAL DATA SHEET

- Jointing Systems
- Spacers
- Polythene Builders Film
- Formwork
- Formworking Accessories
- Fasteners
- Tie Wire
- Loop Ties
- Waterproofing

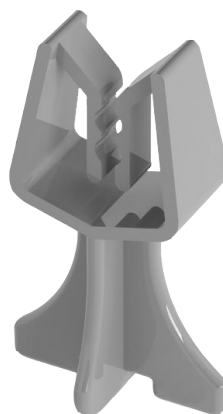
P: 1300 ALLCON (255 266)
E: sales@allcongroup.com.au

www.allcongroup.com.au

Fast Clip Bar Chairs

DESCRIPTION

Fast Clip Bar chairs, commonly referred to as FCB's, clip on to bar to space reinforcing off formwork. Each size of chair will provide a different cover off the formwork. They are suitable for reinforcing from 4mm to 20mm in diameter and are available in 20mm -75mm cover.



FEATURES & BENEFITS

- Made in Australia
- Complies to AS/NZS2425:2015
- Strong & Stable Design
- Simple to clip on to bar

ESTIMATING & SIZES

Set-Up fast clip bar chairs are packed in bags of 100 chairs.

Code	Concrete Cover	Pack	Packs/Pallet
Fast Clip Bar Chairs			
FCB25	25mm	100	50
FCB30	30mm	100	50
FCB35	35mm	100	50
FCB40	40mm	100	50
FCB50	50mm	100	50
FCB60	60mm	100	50
FCB65	65mm	100	50
FCB75	75mm	100	50

DISCLAIMER

Set-Up products are manufactured to the highest quality, and if used in the correct applications and in accordance with all directions, will produce quality and consistent results. However Allcon Group Pty Ltd accepts no responsibility for inappropriate usage or faulty workmanship by the end user.

Product: Set-Up Fast Clip Bar Chairs
Issue Date: 9 October 2020