

## TECHNICAL DATA SHEET

- Jointing Systems
- Spacers
- Polythene Builders Film
- Formwork
- Formworking Accessories
- Fasteners
- Tie Wire
- Loop Ties
- Waterproofing

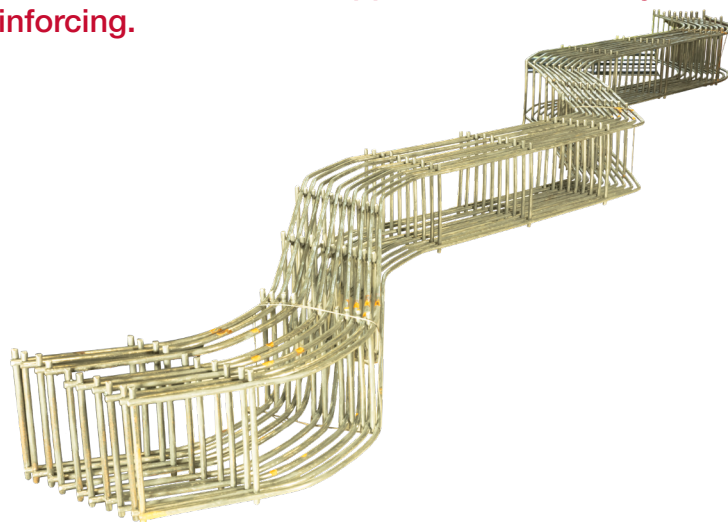
P: 1300 ALLCON (255 266)  
E: sales@allcongroup.com.au

[www.allcongroup.com.au](http://www.allcongroup.com.au)

## HD Double Mesh Spacers

### DESCRIPTION

Heavy duty double mesh spacers or mesh snakes are a quick and simple way to support a second layer of reinforcing mesh in slab on ground applications. Mesh snakes are much more stable and eliminate the need to use tall bar chairs to support the second layer of reinforcing.



### FEATURES & BENEFITS

- Strong and Stable
- Simple and easy to use
- Save time and reduce fatigue

### ESTIMATING & SIZES

Spacing depends on the gauge of the reinforcing however as a general guide, we recommend 1 spacer every 600-1000mm.

Code	Size	Pack
Double Mesh Spacers		
BCHDDMS50	50mm x 2m	10
BCHDDMS75	75mm x 2m	10
BCHDDMS100	100mm x 2m	10

### DISCLAIMER

Set-Up products are manufactured to the highest quality, and if used in the correct applications and in accordance with all directions, will produce quality and consistent results. However Allcon Group Pty Ltd accepts no responsibility for inappropriate usage or faulty workmanship by the end user.

Product: Set-Up Heavy Duty Double Mesh Spacers  
Issue Date: 9 October 2020